

# Real Estate News

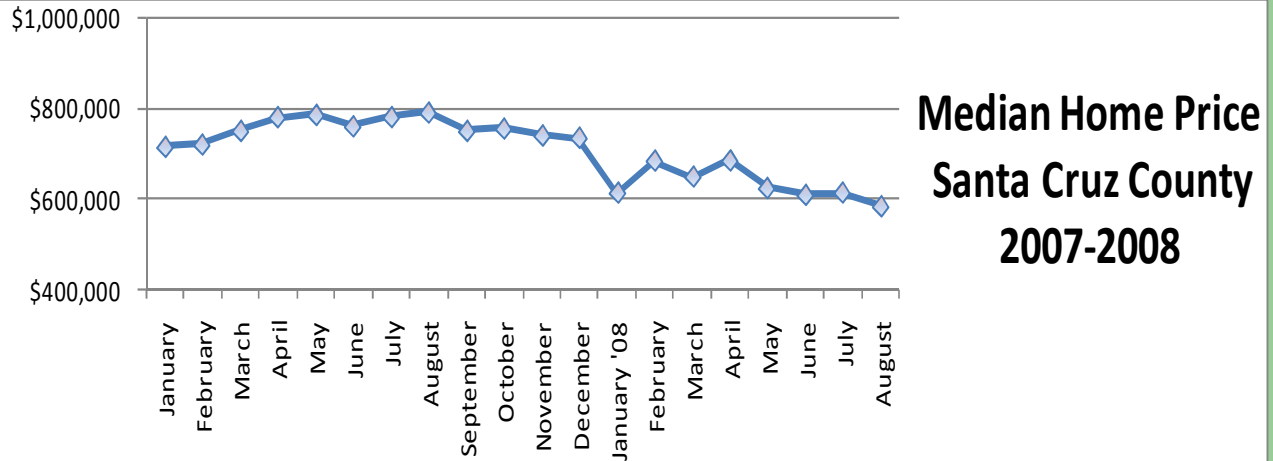
Coast Country Real Estate

Volume 4, Issue 3

**BETTSY TYLER**  
831- 332-2298

**LINDA DARRIGO**  
831- 227-7504

October 2008



The housing slump hitting the nation is shaping up to be one of the worst in a generation. The graph above shows the effect it has had on Santa Cruz County median home prices: a drop from almost \$800,000 to just below \$600,000 from August '07 to August '08.

Is it a good time to buy? It hasn't been this good for buyers in a long time. Listed below are a few reasons why:

1. Home prices are much lower than they have been in a long time.
2. Interest rates are relatively low.
3. A large inventory therefore, lots of houses to choose from.
4. Loans are available.
5. Foreclosures are abundant offering unique advantages for those looking to buy.

Property	Last Sale	Currently listed	City	Bed/bath
Schooner Ct.	\$800,000	\$529,000	Santa Cruz	3/2
Woodrose Ave.	\$635,000	\$467,900	Santa Cruz	3/2
Wilkie Ave.	\$729,000	\$420,000	Watsonville	3/1.5
Holm Rd.	\$619,000	\$229,000	Watsonville	2/1